

BILL OF MATERIAL					B13510-1
ITEM	DESCRIPTION	MATERIAL	DETAIL DWG. & ITEM	REQ'D	REMARKS
1	EYE DEADEND SUB-ASY.	NOTE 2	SEE TABLE	1	
2	DEADEND BODY SUB-ASY.	ALUMINUM	SEE TABLE	1	
3	TERMINAL	ALUMINUM	SEE TABLE	1	
4	CLEVIS DEADEND SUB-ASY.	NOTE 2	SEE TABLE	1	

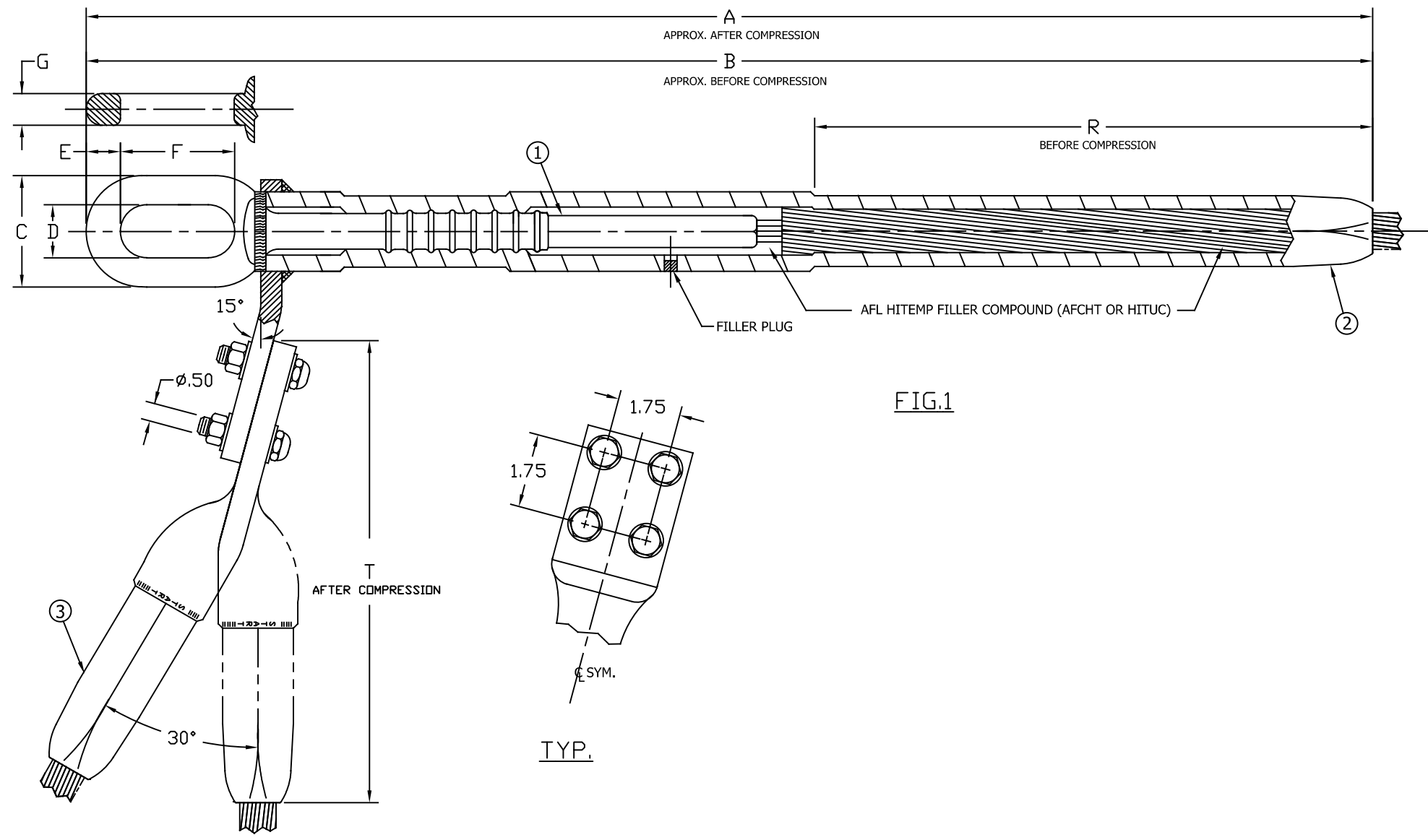


FIG.1

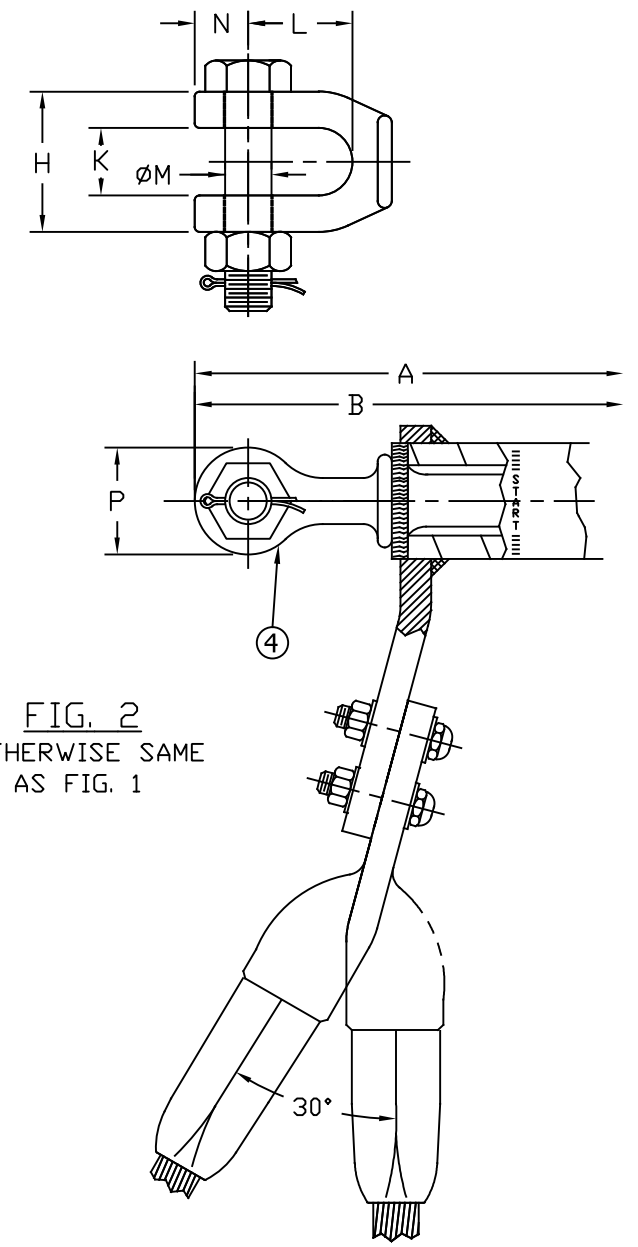


FIG. 2
OTHERWISE SAME
AS FIG. 1

NOTES:

- IDENTIFICATION SHALL CONSIST OF "AFL", CONDUCTOR SIZE, DIE SIZE, AND CATALOG NUMBER.
- EYE DEADEND (ITEM 1) SHALL CONSIST OF A STEEL FORGING AND FELT WASHER. CLEVIS DEADEND (ITEM 4) SHALL CONSIST OF STEEL CLEVIS FORGING (WITH NUT, BOLT AND COTTER) AND FELT WASHER.
- DEADEND BODY (ITEM 2) SHALL CONSIST OF THE FOLLOWING ALUMINUM PARTS; BARREL, TONGUE, AND FILLER PLUG, AND MAY CONTAIN ALUMINUM FILLER SLEEVE.
- FOR EHV FINISH, ADD "EHV" SUFFIX TO END OF PART NUMBER.

ORDERING INFORMATION
CUSTOMER TO ORDER BY CATALOG NUMBER
i.e. B13510-A-TS

				FAFL	
				DEADEND	
				FOR TS SOLUTIONS COMPOSITE CORE CONDUCTOR	
REVISIONS ON SHEET 2					
DATE	NO.	REVISION RECORD	PROJECT	DR.	CK.
				ASSEMBLY	
THIS DRAWING AND ALL INFORMATION ON IT IS THE PROPERTY OF AFL. IT IS CONFIDENTIAL AND IT IS GIVEN TO YOU FOR A LIMITED PURPOSE AND MUST BE RETURNED UPON REQUEST. NEITHER THIS DRAWING OR ANY PART OF IT NOR ANY INFORMATION CONCERNING IT MAY BE COPIED, EXHIBITED, OR FURNISHED TO OTHERS NOR PHOTOGRAPHS TAKEN OF ANY ARTICLE FABRICATED OR ASSEMBLED FROM THE DRAWING WITHOUT THE CONSENT OF AFL.				DESIGNER	R. WEST
				SCALE	N.T.S.
				DATE	12/11/19
				CHECK	M. WELBORN
				SHEET	1/2
				REVISION	15
				PA	PA2019-251
				DRN	
SUPERSEDED BY:					

* USE 100A COMPRESSOR ONLY
 Δ WEIGHT INCLUDES TERMINAL

CATALOG NUMBER	CONDUCTOR		FIG.	DIMENSIONS IN INCHES														ITEMS PER BILL OF MATERIAL				* DIE SIZES		AFL HITEMP FILLER COMPOUND						Δ WEIGHT IN POUNDS		
	SIZE	DIA.		A	B	C	D	E	F	G	H	K	L	M	N	P	R	T	1	2	3	4	STANDARD ALUM.	STEEL	DEAD END		TERMINAL		TOTAL			
				LBS.	APPROX. AMT. OF 1# TUBE	LBS.	APPROX. AMT. OF 1# TUBE	LBS.	APPROX. AMT. OF 1# TUBE	LBS.	APPROX. AMT. OF 1# TUBE	ALUM.	TOTAL																			
B13510-A-TS	TS DRAKE/TW	1.108	1	38.51	36.03	2.63	1.25	.88	2.96	.75	—	—	—	—	—	—	16.00	20.11	B13364-4	B13363-A	B13533-A	—	10040AH	10018SH	.67	2/3 TUBE	.33	1/3 TUBE	1.0	1 TUBE	10.1	14.2
B13510-B-TS	TS BLUEBIRD/TW	1.762	1	50.45	47.11	4.40	1.91	1.75	3.50	1.25	—	—	—	—	—	—	16.88	28.61	B13364-6	B13363-B	B13533-B	—	10048AH	10024SHSP	1.30	1-1/3 TUBES	.50	1/2 TUBE	2.0	2 TUBES	27.4	41.3
B13510-C-TS	TS TERN/TW LIGHT	1.002	1	38.51	36.03	2.63	1.25	.88	2.96	.75	—	—	—	—	—	—	16.00	20.11	B13364-7	B13363-C	B13533-C	—	10040AH	10018SH	.67	2/3 TUBE	.33	1/3 TUBE	1.0	1 TUBE	10.4	14.6
B13510-D-TS	TS DOVE/TW	.927	1	32.56	29.94	2.63	1.25	.88	2.69	.75	—	—	—	—	—	—	13.25	20.28	B13364-10	B13363-D	B13533-D	—	10034AH	10014SH	1.00	1 TUBE	.33	1/3 TUBE	1.3	1 1/3 TUBE	10.3	26.1
B13510-E-TS	TS CLOUDVEIL/TW	1.165	1	39.21	36.53	2.63	1.25	.88	2.69	.75	—	—	—	—	—	—	16.50	20.28	B13364-13	B13363-E	B13533-E	—	10042AH	10018SH	1.00	1 TUBE	.50	1/2 TUBE	1.5	1 1/2 TUBE	22.4	26.6
B13510-F-TS	TS FALCON/TW	1.545	1	40.02	36.87	2.63	1.25	.88	2.96	.75	—	—	—	—	—	—	16.88	28.61	B13364-9	B13363-F	B13533-F	—	10048AH	10018SH	1.30	1-1/3 TUBES	.50	1/2 TUBE	2.0	2 TUBES	29.1	33.3
B13510-K-TS	TS KILLDEER/TW	1.720	2	44.55	41.62	—	—	—	—	—	3.69	1.56	2.88	1.25	1.44	2.88	16.88	25.00	—	B13363-K	B13533-K	B14546-1	10048AH	10020SH	1.33	1-1/3 TUBES	.50	1/2 TUBE	2.0	2 TUBES	29.4	40.1
B13510-N-TS	TS BASIN/TW	1.315	1	40.02	36.87	2.63	1.25	.88	2.96	.75	—	—	—	—	—	—	16.88	28.61	B13364-8	B13363-N	B13533-N	—	10048AH	10018SH	1.30	1-1/3 TUBES	.50	1/2 TUBE	2.0	2 TUBES	29.5	33.8
B13510-T-TS	TS FERNDW/TW	1.063	1	38.51	36.03	2.63	1.25	.88	2.96	.75	—	—	—	—	—	—	16.00	20.11	B13364-12	B13363-T	B13533-T	—	10040AH	10018SH	.67	2/3 TUBE	.33	1/3 TUBE	1.0	1 TUBE	10.4	14.6
B13510-X-TS	TS FISHERS/TW	1.108	1	38.51	36.03	2.63	1.25	.88	2.96	.75	—	—	—	—	—	—	16.00	20.11	B13364-9	B13363-X	B13533-X	—	10040AH	10018SH	.67	2/3 TUBE	.33	1/3 TUBE	1.0	1 TUBE	10.2	14.4
B13510-Y-TS	TS RUDDY/TW	1.131	1	39.21	36.53	2.63	1.25	.88	2.69	.75	—	—	—	—	—	—	16.50	20.28	B13364-11	B13363-Y	B13533-Y	—	10042AH	10018SH	1.00	1 TUBE	.50	1/2 TUBE	1.5	1 1/2 TUBE	22.4	26.6
B13510-Z-TS	TS WILLIAMSON/TW	1.545	1	41.25	38.11	3.25	1.25	1.12	2.69	1.00	—	—	—	—	—	—	16.88	25.00	B13364-14	B13363-Z	B13533-Z	—	10048AH	10020SH	1.33	1-1/3 TUBES	.50	1/2 TUBE	2.0	2 TUBES	29.4	33.9
B13510-AE-TS	TS EVANS/TW	1.545	1	50.45	47.11	4.40	1.91	1.75	3.50	1.25	—	—	—	—	—	—	16.88	28.61	B13364-16	B13363-AE	B13533-AE	—	10048AH	10024SHSP	1.30	1-1/3 TUBES	.50	1/2 TUBE	2.0	2 TUBES	27.4	41.3
B13510-AF-TS	TS SCAFELL/TW	1.700	1	50.45	47.11	4.40	1.91	1.75	3.50	1.25	—	—	—	—	—	—	16.88	28.61	B13364-19	B13363-AF	B13533-AF	—	10048AH	10024SHSP	1.30	1-1/3 TUBES	.50	1/2 TUBE	2.0	2 TUBES	28.3	42.1
B13510-AG-TS	TS GOULD/TW	1.108	1	38.51	36.03	2.63	1.25	.88	2.96	.75	—	—	—	—	—	—	16.00	20.11	B13364-22	B13363-AG	B13533-AG	—	10040AH	10018SH	.67	2/3 TUBE	.33	1/3 TUBE	1.0	1 TUBE	10.1	14.2
B13510-AL-TS	TS LUCANIA/TW	1.382	1	40.02	36.87	2.63	1.25	.88	2.69	.75	—	—	—	—	—	—	16.88	28.61	B13364-17	B13363-AL	B13533-AL	—	10048AH	10018SH	1.30	1-1/3 TUBES	.50	1/2 TUBE	2.0	2 TUBES	29.5	33.8
B13510-AM-TS	TS MARSHALL/TW	.783	1	31.56	29.06	2.63	1.25	.88	2.69	.75	—	—	—	—	—	—	12.00	19.08	B13364-18	B13363-AM	B13533-AM	—	10030AH	10014SH	.67	2/3 TUBE	.33	1/3 TUBE	1.0	1 TUBE	8.7	12.8
B13510-AN-TS	TS PENNELL/TW	1.140	1	39.21	36.53	2.63	1.25	.88	2.69	.75	—	—	—	—	—	—	16.50	20.28	B13364-8	B13363-AN	B13533-AN	—	10042AH	10018SH	1.00	1 TUBE	.50	1/2 TUBE	1.5	1 1/2 TUBE	22.6	26.9
B13510-AQ-TS	TS ALGONQUIN/TW	.858	1	31.56	29.06	2.63	1.25	.88	2.69	.75	—	—	—	—	—	—	12.00	19.08	B13364-20	B13363-AQ	B13533-AQ	—	10030AH	10014SH	.67	2/3 TUBE	.33	1/3 TUBE	1.0	1 TUBE	8.9	13.1
B13510-AX-TS	TS FORELIEN/TW	.720	1	32.27	28.18	2.13	.88	.81	2.50	.69	—	—	—	—	—	—	12.00	17.82	B13364-21	B13363-AX	B13533-AX	—	10024AH	10012SH	.67	2/3 TUBE	.33	1/3 TUBE	1.0	1 TUBE	5.9	7.9

ORDERING INFORMATION
 CUSTOMER TO ORDER BY CATALOG NUMBER
 i.e. B13510-A-TS

DEADEND			
FOR TS SOLUTIONS COMPOSITE CORE CONDUCTOR			
ASSEMBLY			
DESIGN	R. WEST	CHECK	M. WELBORN
SCALE	N.T.S.	DATE	12/11/19
B13510-2	2/2	15	PA2019-251

THIS DRAWING AND ALL INFORMATION ON IT IS THE PROPERTY OF AFL. IT IS CONFIDENTIAL AND IT IS GIVEN TO YOU FOR A LIMITED PURPOSE AND MUST BE RETURNED UPON REQUEST. NEITHER THIS DRAWING OR ANY PART OF IT NOR ANY INFORMATION CONCERNING IT MAY BE COPIED, EXHIBITED, OR FURNISHED TO OTHERS NOR PHOTOGRAPHS TAKEN OF ANY ARTICLE FABRICATED OR ASSEMBLED FROM THE DRAWING WITHOUT THE CONSENT OF AFL.