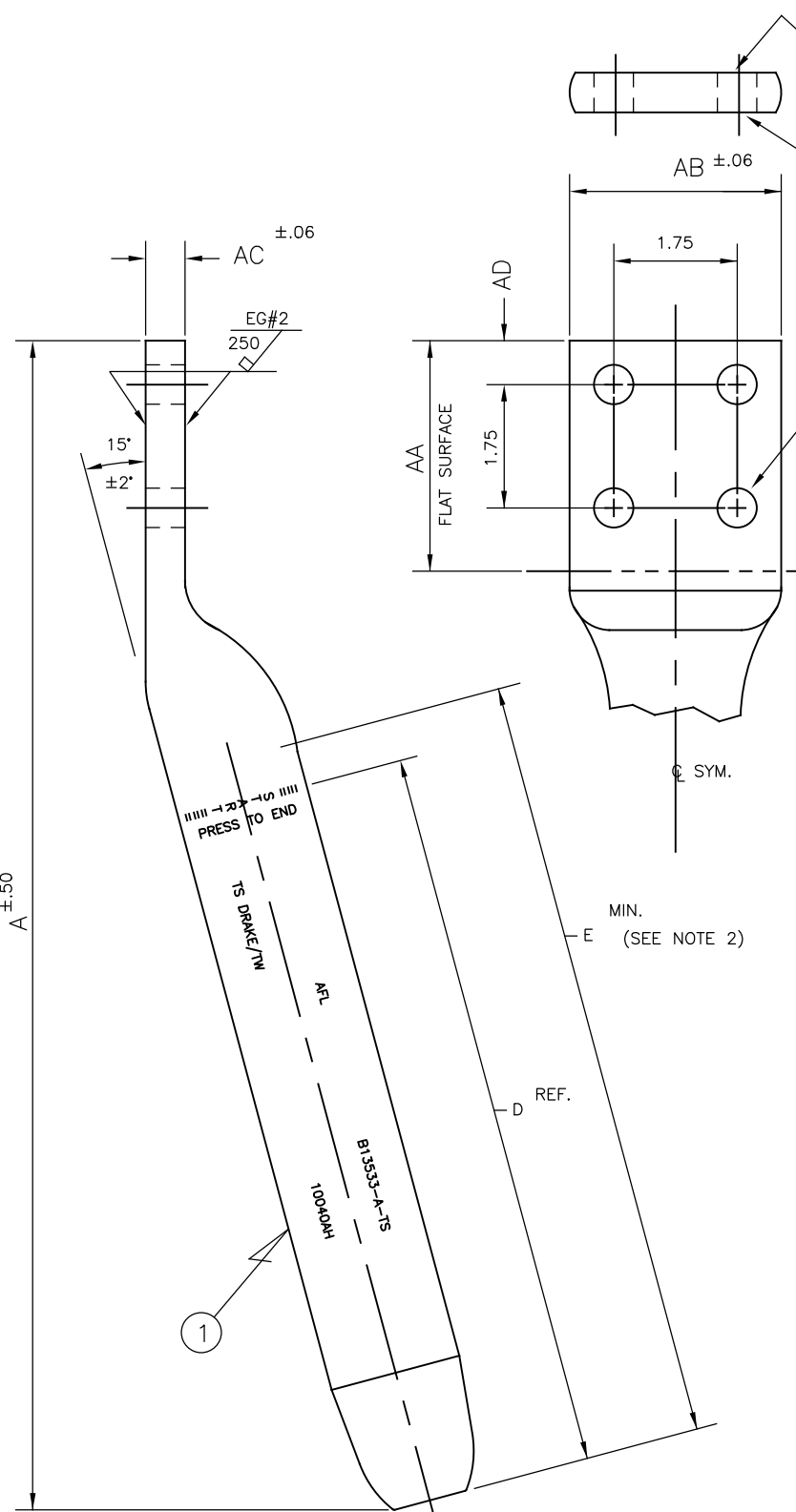


BILL OF MATERIAL

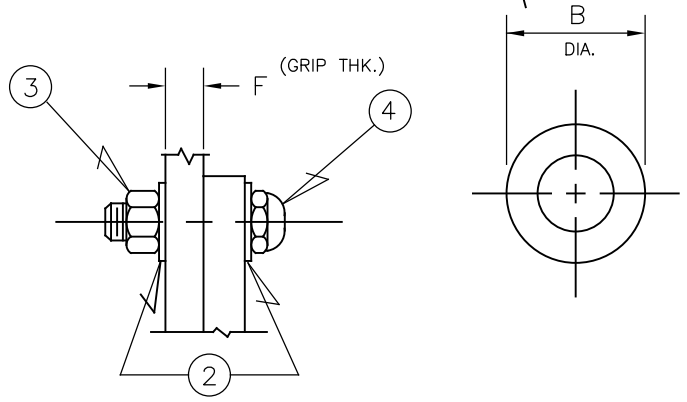
ITEM	DESCRIPTION	MATERIAL	DETAIL DWG. & ITEM	REQ'D.	REMARKS
1	TERMINAL CONNECTOR	ALUM.	B13532	1	
2	WASHER-PLAIN	ALUM.	D2920-4	8	
3	HEX. NUT	ALUM.	D4314-4	4	
4	HEX. HD. BOLT "HV"	ALUM.	SEE TABLE	4	

NOTES:

1. FLATTENED TERMINAL PAD SHALL BE WATER TIGHT.
2. AFTER FLATTENING TERMINAL PAD, EACH TERMINAL BARREL SHALL PERMIT FREE PASSAGE OF AN INSPECTION GAGE TO A MINIMUM DEPTH OF "E". REFER TO TABLE FOR INSPECTION GAGE DIAMETER.
3. DEBURR ALL SHARP EDGES AND CORNERS.
4. LOOSE POLY-BAG HARDWARE, THEN LOOSE POLY-BAG TERMINAL WITH HARDWARE.
5. TERMINALS ARE SUPPLIED WITH "H.V." BOLTS
6. IDENTIFICATION SHALL CONSIST OF "AFL", CONDUCTOR SIZE, DIE SIZE, AND ASSEMBLY DRAWING AND LETTER.



ASSEMBLY DWG. AND LETTER	CONDUCTOR SIZE	DIMENSIONS IN INCHES										ITEMS PER B/M		INSPECTION GAGE DIAMETER	"AFCHT" COMPOUND		DIE SIZE	WEIGHT IN LBS.
		A	B	D	E	F	AA	AB	AC	AD	1	4	LBS		APPROX. AMOUNT OF 1# TUBE			
B13533-A-TS	TS DRAKE/TW	19.38	2.500	10.25	10.75	.75	4.50	4.00	.69	1.12	B13532-1	C5257-1G	1.108	.54	1/2 TUBE	10040AH	6.4	
B13533-B-TS	TS BLUEBIRD/TW	26.50	3.000	16.88	14.50	.75	4.50	4.00	.81	1.12	B13532-2	C5257-1G	1.762	.54	1/2 TUBE	10048AH	10.8	
B13533-C-TS	TS TERN/TW LIGHT	19.38	2.500	10.25	10.75	.75	4.50	4.00	.69	1.12	B13532-3	C5257-1G	1.002	.54	1/2 TUBE	10040AH	6.4	
B13533-D-TS	TS DOVE/TW	18.19	2.125	11.12	11.62	.62	3.50	3.00	.62	.62	B13532-6	C5257-1F	.927	.33	1/3 TUBE	10034AH	4.2	
B13533-E-TS	TS CLOUDVEIL/TW	23.00	2.625	12.75	13.25	.75	4.50	4.00	.72	1.12	B13532-9	C5257-1G	1.165	.54	1/2 TUBE	10042AH	8.6	
B13533-F-TS	TS FALCON/TW	26.50	3.000	16.88	14.50	.75	4.50	4.00	.81	1.12	B13532-4	C5257-1G	1.545	.54	1/2 TUBE	10048AH	10.9	
B13533-K-TS	TS KILLDEER/TW	26.50	3.000	16.88	14.50	.75	4.50	4.00	.81	1.12	B13532-11	C5257-1G	1.720	.54	1/2 TUBE	10048AH	10.9	
B13533-N-TS	TS BASIN/TW	26.50	3.000	16.88	14.50	.75	4.50	4.00	.81	1.12	B13532-5	C5257-1G	1.315	.54	1/2 TUBE	10048AH	11.0	
B13533-T-TS	TS FERNOW/TW	19.38	2.500	10.25	10.75	.75	4.50	4.00	.69	1.12	B13532-8	C5257-1G	1.063	.54	1/2 TUBE	10040AH	6.4	
B13533-X-TS	TS FISHERS/TW	19.38	2.500	10.25	10.75	.75	4.50	4.00	.69	1.12	B13532-17	C5257-1G	1.108	.54	1/2 TUBE	10040AH	6.4	
B13533-Y-TS	TS RUDDY/TW	23.00	2.625	12.75	13.25	.75	4.50	4.00	.72	1.12	B13532-7	C5257-1G	1.131	.54	1/2 TUBE	10042AH	8.6	
B13533-Z-TS	TS WILLIAMSON/TW	26.50	3.000	16.88	14.50	.75	4.50	4.00	.81	1.12	B13532-10	C5257-1G	1.545	.54	1/2 TUBE	10048AH	10.9	
B13533-AE-TS	TS EVANS/TW	26.50	3.000	16.88	14.50	.75	4.50	4.00	.81	1.12	B13532-12	C5257-1G	1.545	.54	1/2 TUBE	10048AH	10.9	
B13533-AF-TS	TS SCAFELL/TW	26.50	3.000	16.88	14.50	.75	4.50	4.00	.81	1.12	B13532-15	C5257-1G	1.700	.54	1/2 TUBE	10048AH	10.9	
B13533-AG-TS	TS GOULD/TW	19.38	2.500	10.25	10.75	.75	4.50	4.00	.69	1.12	B13532-1	C5257-1G	1.108	.54	1/2 TUBE	10040AH	6.4	
B13533-AL-TS	TS LUCANIA/TW	26.50	3.000	16.88	14.50	.75	4.50	4.00	.81	1.12	B13532-13	C5257-1G	1.382	.54	1/2 TUBE	10048AH	11.1	
B13533-AM-TS	TS MARSHALL/TW	17.00	1.875	10.25	10.75	.56	3.50	3.00	.56	.62	B13532-14	C5257-1E	.783	.33	1/3 TUBE	10030AH	3.2	
B13533-AQ-TS	TS ALGONQUIN/TW	17.00	1.875	10.25	10.75	.56	3.50	3.00	.56	.62	B13532-16	C5257-1E	.858	.33	1/3 TUBE	10030AH	3.1	



ORDERING INFORMATION
CUSTOMER TO ORDER BY ASSEMBLY DRAWING & LETTER. ie B13533-A-TS

ASY. REF.: B13510

DATE	NO.	REVISION RECORD	DR.	CK.	PA
10/09/24	13	ADD ASY AG; REORDER ASY DWG NOS.	RW	MW	PA24-352
09/05/24	12	ADD ASY X; REORDER ASY DWG NOS.	RW	MW	PA24-303
03/06/24	11	ADD ASY AF & AQ; REORDER ASY DWG NOS.	RW	MW	PA24-063
02/15/24	10	REMOVE TS TERN/TW FROM ASY T	RW	PC	PA24-046
01/09/24	9	ADD ASY AE, AL & AM	RW	MW	PA24-008
08/07/23	8	ADD ASY K, T & LIGHT TO ASY. C COND. SZ.	TM	MW	PA23-204
06/15/23	7	ADD ASY E & Z	SC	MW	PA23-175
10/12/22	6	ADD ASY Y	TM	MW	PA22-396

FAFL
TERMINAL
FOR TS SOLUTIONS COMPOSITE CORE CONDUCTOR

FINISHING DETAILS & ASSEMBLY

DESIGNED BY: R. WEST
CHECKED BY: M. WELBORN
DATE: 12/12/19
SCALE: N.T.S.

B13533
PA2019-251